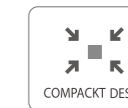


Xprinter®

XP-TT426B

Thermal Transfer / Direct Thermal

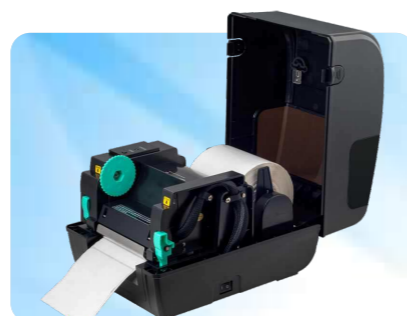


Thermal Transfer / Direct Thermal

XP-TT426B



- Equipped dual motor
- Print speed up to 127mm/s
- Ribbon roll capacity 300m, 25.4mm Ribbon Roller (Outer roll ribbon)
- Supporting TSPL-EZ printer language, Eltron and Zebra commands
- Large visual windows



Printer Specifications

Resolution	203DPI
Print Method	Thermal Transfer / Direct Thermal
Memory	8 MB RAM/8 MB Flash
Max. Print width	4.09 in./104 mm
Max. Print Speed	Up to 5 ips (127 mm/s)
Media Sensors	Movable Black Mark Sensor/Movable Gap Sensor
Emulation	TSPL, ZPL, EPL, DPL
Interface	USB, USB+Serial, USB+Ethernet, USB+Serial+Ethernet (Optional Wireless Connectivity: Bluetooth / Wi-Fi)
Others	Standard SD Card Slot, Optional RTC

Media and Ribbon Characteristics

Media Length	0.39 in.-70 in.(10 mm-1778 mm)
Media Width	1 in.-4.6 in.(25.4 mm-118 mm)
Media Roll Size	5 in./127 mm Outer Diameter/Core Inner Diameter: 1 in.(25.4 mm)
Thickness	0.0023 in.(0.06 mm) Min.; 0.01 in.(0.254 mm) Max.
Media Types	Continuous, Gap, Black mark, Fan-fold, Perforated Media
Ribbon Outside Diameter	2.63 in./67 mm
Max. Ribbon Length	300 Meters (984 ft.)
Ribbon Width	1 in.-4.3 in.(25.4 mm-110 mm)
Ribbon Core I.D.	1 in./25.4 mm

Environment Condition

Operating Temp.	5~40°C (41~104°F)
Storage Temp.	-40~60°C (-40~140°F)
Operating Humidity	25 ~ 85% Non-Condensing
Storage Humidity	10 ~ 90% Non-Condensing

Fonts/Graphics/Symbologies

1D Bar Codes	Code 39, Code 93, Code 128UCC, Code 128 subsets A, B, C, Codabar, Interleaved 2 of 5, EAN-8, EAN-13, EAN-128, UPC-A, UPC-E, EAN and UPC 2(5) digits add-on, MSI, PLESSEY, POSTNET, China POST, GS1 DataBar, Code 11
2D Bar Codes	PDF-417, Maxicode, DataMatrix, QR code, Aztec
Fonts and Graphics	Font 0 ~ Font 8

Software

Driver	Windows / Linux / Mac / Android / Chrome OS
SDK	Windows / Linux / Android / iOS
Software	Bartender UltraLite / Mobile Label Design App

Accessories

Standard Accessories	Power Adapter, Power Cord, USB Cable, User Manual, CD, Label spindle, Fixing tab, Ribbon spindle, Ribbon for test, Ribbon paper core, label roll for test
Factory Installed Options	Bluetooth Module, Wi-Fi Module, Peel-off Module, Cutter Module
User Options	8" External Paper Roll Holder

Product Warranty

Printhead life	The earlier of 30 km usage or 1 year
Platen roller life	The earlier of 30 km usage or 1 year
Printer Warranty	1 Year

Physical Characteristics

Dimension	299 mm x 235 mm x 198.3 mm (D x W x H)
Weight	2.55 kg